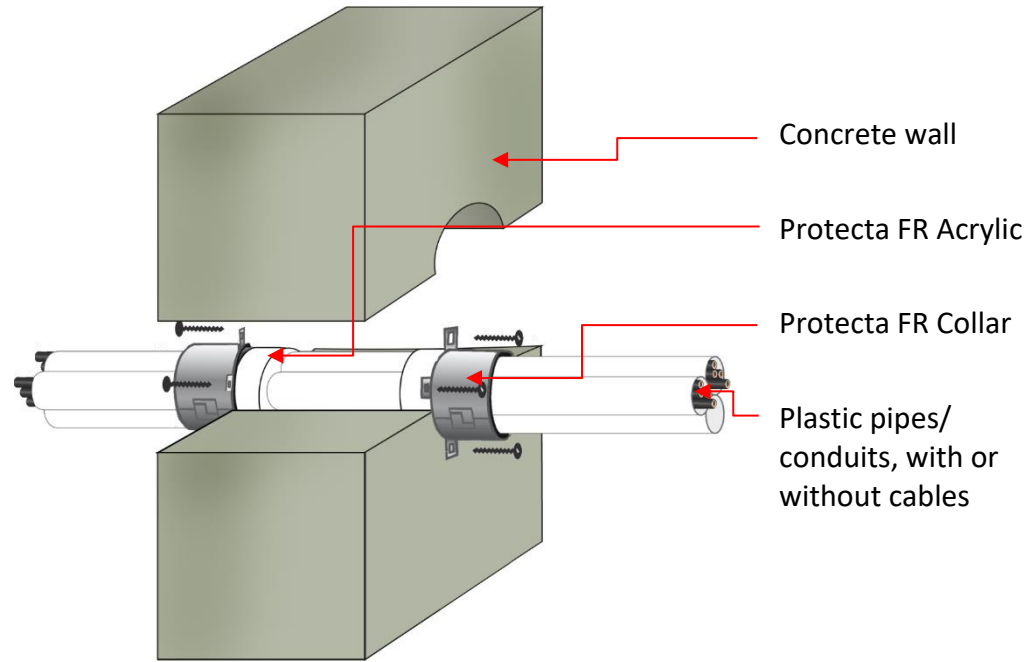


PP Pipe Types: PP-MV, PP-H, PP-R & similar
PE Pipe Types: PE-LD, PE-MD, PE-HD, PE-X & similar

Oversized Collars
Max Pipe Size: 50mm
Max Angle: 45°
Max Collar Size: 160mm
Max FRR: -/120/120



Installation Instructions:

1. Clean apertures of dust, grease, and debris.
2. Seal the annular gap between pipe and wall with Protecta FR Acrylic.
 - Gaps ≤8mm: Apply a bead.
 - Gaps ≥8mm: Apply 25mm deep.
3. Fit FR Collar around service penetration. Ensure all fixing lugs are tight to the substrate and fixings can be fully inserted.
4. For uneven surfaces, apply a bead of FR Acrylic between the substrate and collar.
5. Fix the FR Collar to the substrate using suitable-length masonry screws/anchors.
6. Refer to **Oversized Collar** for oversized annular gaps or angled pipes.



Services & Ratings (FRR)

Service Penetration	Pipe Size / Bundle Size	Max FRR
PVC pipe	≤40mm / ≤160mm	-/90/90
PE pipe		
PP pipe		
Smoke sealing: No measurable smoke leakage ≤200Pa with 10mm FR Acrylic		
Acoustic rating (seal only): STC58		

Note: Refer to pages 2, 3 & 4 for a detailed table of service penetrations, including applicable pipe sizes, FR Collar heights, and FRR ratings.

Compliance

Report Jensen Hughes 5147800B
Rev/Ref R3.6 / FAS190125, 260234
Pages 10-12, 42 & 43
Standards AS1530.4-2014 & AS4072.1-2005

Firestop Centre Technical Support:
 Tel: +64 9 483 4000
info@firestopcentre.co.nz
www.firestopcentre.co.nz

Drawing Rev: 1.1

Scale: NTS

Disclaimer: Firestop Centre may change product specifications without notice as part of our ongoing development and testing. All information in this document is provided in good faith and for guidance only. All drawings are for illustration purposes only and may not reflect the actual product. Since we cannot control how the product is installed or the conditions on-site, we do not guarantee the product's performance. We also accept no responsibility for any loss, damage, or injury resulting from the use of this information.

Service Penetration	Pipe Size / Bundle Size	Pipe Wall Thickness	Cable Sizes	Collar Size / Collar Height	FRR	Test Config.
PVC pipe, empty or containing electric cables (partially or fully filled)	≤40mm / ≤160mm	1.0-3.7mm	≤21mm	110mm / 50mm	-/90/90	U/C
				125mm-160mm / 60mm		
PE pipe, empty or containing electric cables (partially or fully filled)		2.0-3.7mm		110mm / 50mm		
				125mm-160mm / 60mm		
PP pipe, empty or containing electric cables (partially or fully filled)		1.8-3.7mm		110mm / 50mm		
				125mm-160mm / 60mm		
PVC, PE and PP pipes can be mixed in the same bundle.						
Applicable to both rigid and flexi conduits.						
Note: For C/C and U/C test configurations, on-site pipe end conditions must match those tested.						